

Situation Unusual In Winter Play

By MARY LEONARD

Play rehearsals are, as a rule, ordinary, unexciting events for the onlooker.

However, when into the middle of a perfectly normal rehearsal come six very un-normal characters—seemingly from nowhere—to demand that they be allowed to perform their story on the stage, events become extraordinary and extremely exciting.

Such is the impact of the events that follow the first entrance of the characters, that it makes for one of the most stimulating and frightening evenings in theatre.

Thursday and Friday evenings, February 11 and 12, the Mercer Players and Alpha Psi Omega will present this fascinating drama, *Six Characters in Search of an Author*, for the Mercer and Macon audience.

Luigi Pirandello, the playwright, brings six characters of his own creation that had never been fully developed to the stage of an ordinary theatre company.

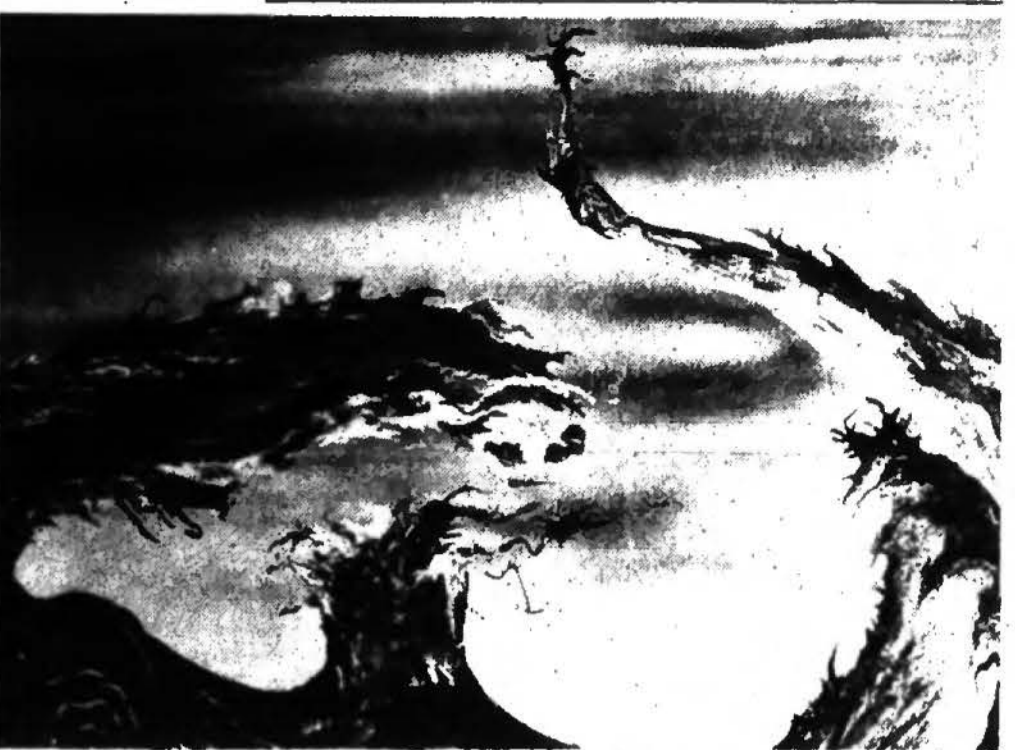
With these characters he compels actor and audience alike to search for the answer to such questions as: What is reality? What is illusion? Who is an individual? Does one act, or do many, determine a person's real nature?

The family of characters bring a story of life that is tortured, frustrating; sometimes sordid, but always full of the anguish of mankind.

The cast and crew of the theatre company are astounded and fascinated by the frightening story of these characters. Although the players are supposedly the real human beings on stage, they seem artificial and shallow in contrast to the family.

Miss Audrey Needles is the director for the show. Mr. Charles Love is the technical director, and has charge of the set as such which consists of a bare stage and such rehearsal props and scenery as is needed.

Others in the cast are Croyln Dorminy, Buck Asbell, Lisa Davis, Burt Sheffield and Taylor Butler. Stage manager is T. Bill Martin. Sara Isaf plays the wardrobe mistress. For more about the play, see page five.



(LEFT) JACK KERSHAW, NASHVILLE ARTIST. (RIGHT) 'VORTEX', ONE OF THE PAINTINGS KERSHAW WILL EXHIBIT HERE.

THE Social Jet

Alpha Delta Pi—ADPi held its annual retreat Saturday, January 23, at the Fickling Lodge. Initiation was Sunday afternoon and the Initiation Banquet was held at the Elk's Club Sunday night. Coming out of town to join the festivities were Freddie Pierce, Trudie Crouse, and Alyce Ambrose . . . Patsy Couch came from Rome, Ga., to attend Homecoming last week-end . . . ADPi Carol Avery was crowned Bear Day Queen at the Homecoming Dance Friday . . . Janice Cooper is going steady with Steve Taylor, a Kappa Sig transfer from Tech.

Alpha Gamma Delta — AGD Mary Jane Carter is Lambda Chi's new pledge sweetheart . . . Newly-elected officers are Lestina Smith, president; Faye Trawick, first vice-president; Becky Smith, second vice-president; Sandra Hays, secretary; and Mary Braswell, treasurer. These officers will be installed on February 28, and on February 27, Mercer Alpha Gams will receive their charter and officially become a chapter of AGD.

Chi Omega — As a result of their rush party two weeks ago, the Chi O's have three new pledges. They are Martha Hall, Maudene Abernathy, and Nancy Edwards.

Phi Mu — Sunday Phi Mu initiated all of its 23 pledges. Grace-Hawks was honored as model pledge, and Kitty King was named model sister. Carol Williams received the outstanding pledge scholarship award and Connie Shaw received a special pledge award . . . Genie Green and Bob Hearn, SAE, are pinned . . . Nancy Childs and Velma Jean Young have gone to Harvard for the Debate Tournament.

MICA — Saturday night, January 23, MICA held a formal banquet and initiation ceremony at

Baconsfield Clubhouse . . . New officers of MICA are Roslyn Tuggle, president; Jane Henderson, first vice-president; Barbara Burkett, second vice-president; Farrar Atkinson, third vice-president; Barbara Allen, secretary; and Joanne Croy, treasurer . . . Jean Blankenship is engaged to Jimmy Reese of Columbus, Margie Hurst is engaged to Kennon Priestler of Macon, and Becky Bethune is engaged to Jimmy Brannon of Georgia State. Ann Smith is going steady with John Parker.

Alpha Tau Omega — The ATO's have a new pledge, Jerry Smith, of Austell, Ga. . . Elbert Hill is pinned to Patricia Wilson of Talbotton.

Kappa Alpha — The KA's held their annual Convivium in celebration of Robert E. Lee's birthday, January 19 at the Lanier Hotel. At the banquet, following the social hour, Mr. Tony Stansfeld spoke on Lee . . . Roy Snodgrass has been named outstanding pledge for last quarter . . . Emmet Johnson is pinned to Ginger Jones, ADPi, and John Haynes is engaged to Judy Collins of Albany.

Lambda Chi Alpha — Lambda Chi's new pledge sweetheart is Mary Jane Carter, a freshman and an Alpha Gam from Savannah . . . Two new brothers have been initiated: Kenny Hazelton and Travis Wells . . . Traveling secretary Neil Scott visited the Lambda Chi suite last week-end . . . A party will be held Saturday night at Hayne's Lodge . . . The Lambda Chi's are having a tea Sunday, February 14, in honor of the mothers and sweethearts of the brothers and pledges . . . Pledge Jerrel Hendrix is engaged to Sue Ellen McGraw.

Phi Delta Theta — The Phi Deltas are busy planning for their Sweetheart Ball to be held the last weekend in February.

Sigma Alpha Epsilon — The pledges gave the brothers a party Saturday January 23 . . . Newly-elected officers of SAE are Benjie Hudson, president; Rabun Matthews, vice-president; Ted Findley, treasurer; Joe Becknell, secretary; Tom Bowden, herald; Paul Tucker, correspondent; David Howard, chronicler; David O'Quinn, warden; and Rabun Matthews and David Howard, IFC representatives.

Art Exhibit To Be Held With Folk Song Recital

When Grace Creswell sings at 8 p.m. in Willingham Chapel Tuesday, the songs will be introduced by Jack Kershaw, a Nashville artist who discovered Mrs. Creswell's unusual ability while painting her portrait.

Kershaw, an enthusiast of folk songs and folk art, found that Mrs. Creswell had been singing authentic mountain ballads since her childhood in the Glen Alpine Community of Tennessee.

plete and authentic folk singer.

Jack Kershaw, a graduate of Vanderbilt University, was Federal director of the Tennessee Art Project before the war and was in charge of plates and research for Index of Design in this area.

His paintings will be on display through February 20th.

Since the war, Kershaw, a well-known painter and sculptor, has exhibited and lectured on art and folk art in various colleges over the country: The University of Georgia, Florence State Teachers College, University of Connecticut, Yale University, University of Tennessee, Peabody College in Nashville, and others.

Kershaw founded and organized a civic art gallery in Nashville at the Parthenon and is president and chairman of the board of the Nashville Civic Arts Association, Inc. Here is a list of Kershaw's paintings and drawings that will be shown here.



GRACE CRESWELL

Encouraged by Kershaw, Mrs. Creswell began a radio program called "The Hill Girl" over station WSM in Nashville. It was an immediate success, and requests for concerts came in from throughout the United States.

Mrs. Creswell has sung at the University of Chicago, Yale, Purdue, Kentucky, Arkansas, Connecticut and other universities.

Now a Houston housewife, Mrs. Creswell spends one week a month on tour with her auto harp and her vast repertoire of folk songs.

One of her earliest memories is that of being perched on a wooden bench in a little community church to sing "O Wondrous Love" for the congregation. She was three or four years old.

She learned songs from her grandfather, her aunt, and from the itinerant "singing school master" of her childhood days.

Now the poet Paul Engle refers to her as "the best folk singer I've heard," and such folk authorities as Charles F. Bryan and Donald Davidson pronounced her a fine, com-

Commissioned portraits in oil: \$500-\$2,000; portrait drawings: \$100-\$200; sculpture, on commission.

Paintings may be rented at \$10.00 a month, on deposit of \$25.00.

1. Folk Song . . . \$225
2. Mid Winter Mass
3. Christ's Mass

Two designs for Christmas Greeting . . . 125 each

4. Mary . . . Sold
5. Explosion . . . 175
6. The Finalists . . . 325
7. Sea Claw . . . 100
8. Black Widow . . . 500
9. Wing in the Cave . . . 500
10. Carnivorous Shade . . . On Loan
11. Flowering Peach . . . 100
12. Container Contained . . . 100
13. Two Red Forms . . . 75
14. Joy . . . 425
15. Faraway Hills Closeup . . . 125
16. Dance Macabre . . . 185
17. Cave of the Sky . . . 500
18. Translucent Dance . . . 150
19. Grace . . . On Loan
20. Intrusion . . . 225
21. Sea Wave . . . On Loan
22. Storm Wave . . . On Loan
23. Inez . . . On Loan
24. Lily Pad . . . 35
25. Old House . . . 25
26. Fair Grounds . . . 50
27. Norma . . . 200
28. Ruth . . . 400
29. Vortex . . . 100

CLUSTER

Society

ENTERTAINMENT • THE ARTS

CARLA DAUGHERTY, EDITOR

The Artistic Flower Shop

Brighten Every Occasion With Flowers
Mrs. Jeannette Alkon 120 New St.
Fred Alkon Jr. Phone SH 6-3262

CHI-CHESTERS

Pharmacies
Tatnall Square Pharmacy

1305 Linden Ave. SH 2-3661

Clothes For Campus Or Classroom At

DAVISON'S